

THE COMPLETE MASONRY CAVITY WALL DRAINAGE SOLUTION IT'S MUCH MORE THAN JUST FLASHING

Cuts Flashing System Installation Time,
Helps Keep Veneer Walls Dry

Available in panels and rolls

Use

- Applicable in all flashing locations, including base of wall, parapet walls, and above bond beams, wall openings and structural steel members

Benefits

- Perfect for new construction and masonry restoration
- FREE takeoff service and custom cutting for masonry wall openings
- Panels and rolls may be custom manufactured using any approved flashing membrane

Product Characteristics

- Clean, non-toxic, and will not oxidize or react with common building materials
- Choice of 5 membranes, 3 termination bars, 6 drip edges and 4 corner types to match nearly any design – see back page for complete information

Sizes and Packaging

PANELS

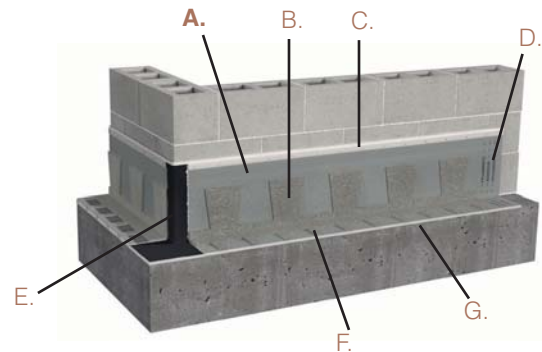
PANEL SIZES	# OF PANELS/BOX
12" x 5-1/2' (5' net)	10 panels/box
18" x 5-1/2' (5' net)	10 panels/box
24" x 5-1/2' (5' net)	10 panels/box

ROLLS

ROLL SIZES	# OF ROLLS/BOX
12" x 50'	3 rolls/box
18" x 50'	2 rolls/box
24" x 50'	1 roll/box

PANEL AND ROLL STANDARD SIZE = 18"

5' (net) panels with flashing membrane, drainage mat, weep tabs, termination bar and drip edge



A. TotalFlash flashing membrane

B. Built-in no-clog Drainage Mat

C. Built-in Termination Bar

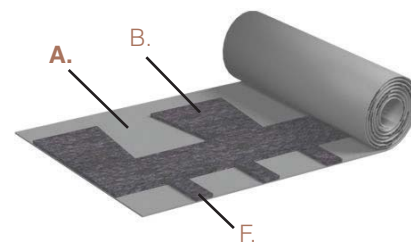
D. Clearly specified Lap Joint

E. Injection molded one-piece CompleteFlash 14" High Corner Boot (sold separately)

F. Built-in no-clog mesh Weep Tabs

G. Built-in metal Drip Edge

50' rolls with flashing membrane, drainage mat and weep tabs



Components for TotalFlash panels and rolls: CompleteFlash 14" High Corner Boots, CompleteFlash End Dams, pre-formed and adjustable metal corners, and BTL-1 butyl sealant.

Additional components for TotalFlash rolls: Termination bars and drip edges.



Moisture Management for Masonry



AVAILABLE MEMBRANES, TERMINATION BARS, DRIP EDGES, METAL CORNERS & SEALANTS



Membranes

- EPDM
- Thermoplastic Vinyl
- Thermoplastic Polyolefin
- Rubberized Asphalt
- York 5 oz. Copper laminate



Termination Bars

- PVC
- Stainless Steel-1/4" lip or no lip

All Termination Bars Packaging LF/Box

20 - 5' long pieces | 100/Box



Hemmed Drip Edges

- Stainless Steel
- Cold-rolled copper
- Kynar-coated galvanized steel in Terra Cotta, Almond, Gray, Tan

All Drip Edges

Standard Size Packaging LF/Box
5' long x 3" wide x 3/8" hemmed edge | 20 - 5' long pieces | 100/Box



Metal Corners

- Stainless Steel (SS)
- Kynar-coated galvanized steel in Terra Cotta, Almond, Gray, Tan



Sealants BTL-1 Butyl

Product	Standard Size	Thickness	Pc/Package
Pre-formed SS 90° Outside Corner	7.5" x 7.5"	26 gauge	10/Package
Adjustable SS Corner	7.5" x 7.5"	26 gauge	10/Package
Pre-formed Kynar-Coated 90° Outside Corner	7.5" x 7.5"	24 gauge	10/Package
Adjustable Kynar-Coated Corner	7.5" x 7.5"	24 gauge	10/Package

Slash installation time and job-site headaches with our FREE takeoff and custom sizing services

Free take off service provides exact quantities of TotalFlash, sealant, and CompleteFlash 14" High Corner Boots and End Dams necessary for your job. Free custom manufacturing of panels to size for all masonry wall openings also available. Contact Steven Fechino, Engineering & Construction Manager, sfechino@mortarnet.com, 219-850-4514.

TotalFlash



Please visit <http://www.mortarnet.com/totalflash-installation.html> for detailed installation instructions.

For more information call 800.664.6638



Moisture Management for Masonry

326 Melton Rd., Burns Harbor, IN 46304
P 800 664 6638 F 219 787 5088
www.mortarnet.com