



## Helps keep brick, stucco, stone and siding-veneered buildings dry

### Use

As a continuous drainage plane behind adhered masonry veneers such as stucco, flat brick and stone to provide drainage and drying.

### Benefits

- Easier, faster installation than installing a drainage plane and lath separately
- Installs like regular lath, no new installation skills or tools necessary
- Combines proven components in an engineered and tested system
- Designed to assist code compliance:
- Clearly shows 1" minimum lath overlap
- Promotes full lath encapsulation without clogging the drainage plane
- Drainage mesh provides an effective mortar barrier
- Drainage mesh edges butt together to form a continuous drainage plane
- Lath is 2.5 lb self-furring, dimpled, diamond mesh G-60 galvanized expanded steel for high strength and corrosion resistance
- Drainage plane mesh is 90% open weave polyester to allow unrestricted flow of moisture to the weep holes
- Created and backed by industry leader Mortar Net Solutions™ in partnership with ClarkDietrich Building Systems
- Assembled in the USA from 100% USA-made materials
- Conforms to ASTM C847

### Product Characteristics

- Metal Lath: 27" W x 97" L
- Drainage Mesh: 0.25" T x 25.5 +/-0.5" W x 94.5 +/-0.5" L

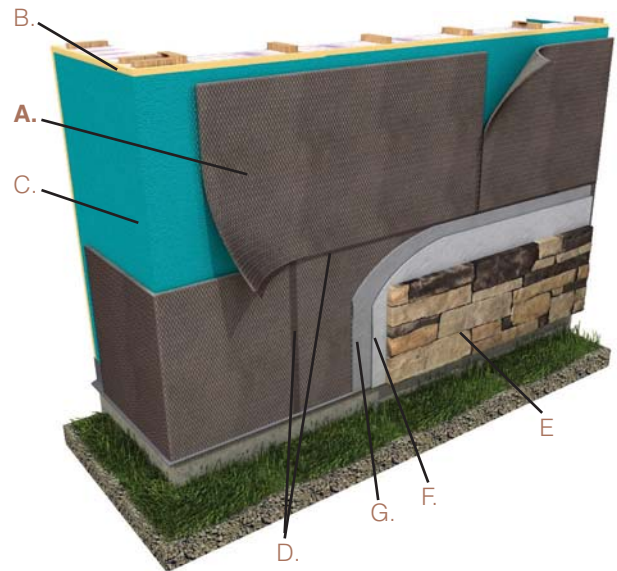
### Sizes & Packaging

THICKNESS	WIDTH*	LENGTH*	BUNDLE	SF/BUNDLE**
0.25"	25.5"	97"	10 sheets	160 SF

\* +/-0.5"

\*\* approximate

100 sheets per pallet (approximate weight: 600 lbs.)



#### A. LathNet

Combination lath & drainage mesh installed left to right

B. Exterior Grade Sheathing

C. Weather Resistive Barrier

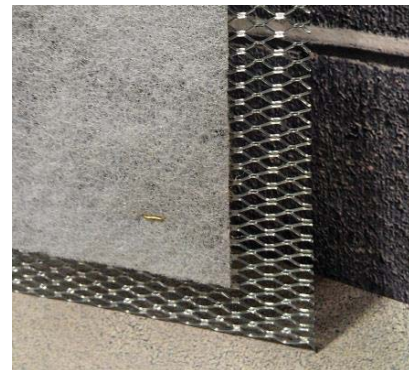
D. LathNet panels shingle-style overlap on all vertical and horizontal joints

E. Thin Stone Veneer or Stucco Finish Coat

F. Scratch Coat

G. Base Coat

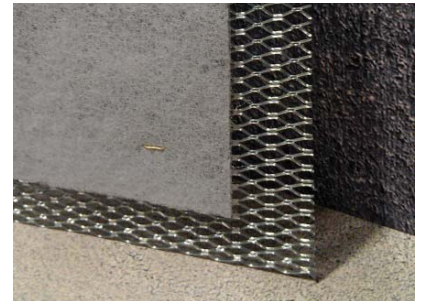
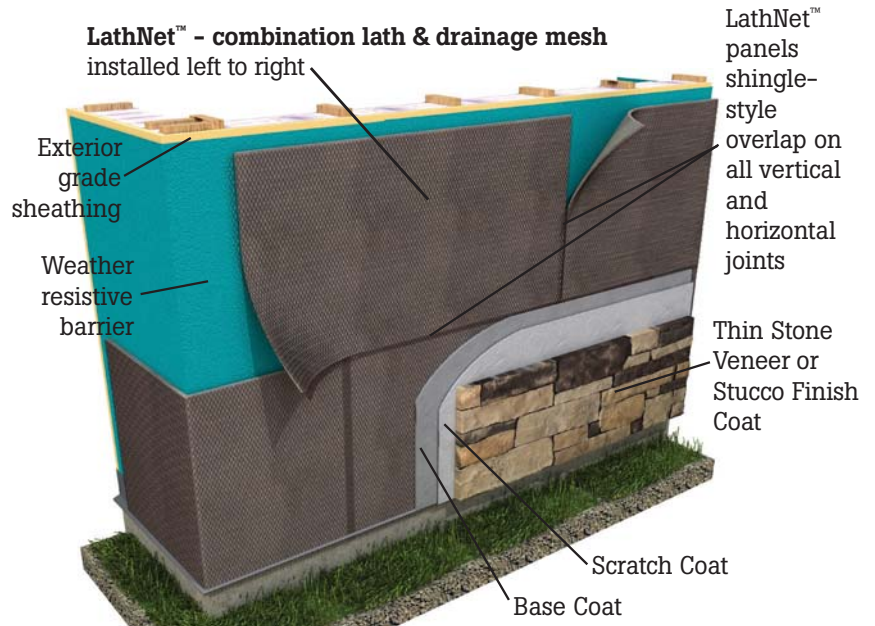
#### LathNet Corner Detail



**LathNet™** is available in 1/4" thickness and packaged in bundles of 10 sheets, 160 SF /Bundle

### Installation Instructions

1. LathNet is installed with the mesh drainage mat against the structural wall and the metal lath toward the outside of the building. Start from the lower left of the wall and install LathNet from left to right (as you face the wall) and bottom to top, with the longer side running horizontally.
2. On one long edge and one short edge of each LathNet section, the mesh is held back from the edge of the metal mesh 1 to 1-1/2 inches. On the first row of LathNet at the bottom of the wall, cut off the metal lath that extends past the mesh on the bottom edge only so the mesh is flush with the lath. This allows the mesh drainage plane to extend all the way to the bottom of the wall.
3. Code requires that the metal lath overlap where the sections of LathNet meet with a 1 inch minimum lath overlap. When installing a new LathNet section to the right of or above an already installed section, overlap the lath of the new section in a shingle fashion over the installed section and position the new section so the drainage mesh butts to the drainage mesh of the installed section. There shall be no gaps between the edges of the drainage mesh so the mesh forms a continuous drainage plane behind the lath everywhere on the wall.
4. If butting LathNet against a solid wall component such as a door jamb or window frame, cut the metal lath so the mesh is flush with the lath to allow the drainage plane to extend all the way to the wall component
5. LathNet may be wrapped around corners as long as it extends a minimum of 12 inches on either side of the corner. When installing LathNet on a wood or metal stud wall, the ends of the lath sections must be fastened to a stud. Stagger all vertical joints.
6. To fasten LathNet to a masonry substrate, use corrosion-resistant fasteners or hardened concrete stub nails with 1 1/4 inch diameter galvanized steel washers placed a minimum of every 16 inches horizontally and 7 inches vertically. Stagger all vertical joints.
7. When fastening LathNet to a steel or wood stud substrate, the LathNet sections must overlap at a stud. Anchor all screws in a stud. Use ceramic coated screws with 1 1/4 inch diameter galvanized steel washers placed a minimum of every 16 inches horizontally and 7 inches vertically. Screws must penetrate wood studs a minimum of 5/8 inch and steel studs a minimum of 3/8 inch. Stagger all vertical joints.
8. For all types of substrates, install fasteners so they penetrate and secure both sections of LathNet where they overlap.



Moisture  
Management  
for Masonry

326 Melton Rd., Burns Harbor, IN 46304  
P 800 664 6638 F 219 787 5088  
www.mortarnet.com





Moisture  
Management  
for Masonry



La ciencia de la construcción moderna ha reconocido la necesidad de drenaje y ventilación entre panel de metal y sustrato en las instalaciones de enchapado de mampostería adherida. LathNet™ satisface esa necesidad combinando el panel y el plano de drenaje en un solo sistema simple.

### Beneficios

- Se instala como lámina o panel de metal estándar
- Instalación más rápida y fácil que instalar un plano de drenaje y panel por separado
- Rápido drenaje y secado
- Promueve el encapsulado del panel de capa base total
- Combina componentes demostrados en un sistema diseñado y probado
- El ensamblaje de fábrica se traduce en alta calidad constante

### Características del producto

- Panel de acero G-60 galvanizado expandido en forma de rombos, de 2,5 lb. con hendiduras y auto-enrasado
- Malla de plano de drenaje de poliéster tejido abierto en un 90 %
- Forma un plano de drenaje continuo y una barrera eficaz para el mortero
- Muestra claramente el solapado mínimo de 1 pulgada de los paneles
- Diseño que facilita el cumplimiento de códigos
- Conforme a ASTM C847
- Creado y respaldado por el líder de la industria Mortar Net Solutions™ en sociedad con ClarkDietrich™ Building Systems
- Ensamblado en EUA a partir de materiales 100 % fabricados en EUA

### Opciones disponibles

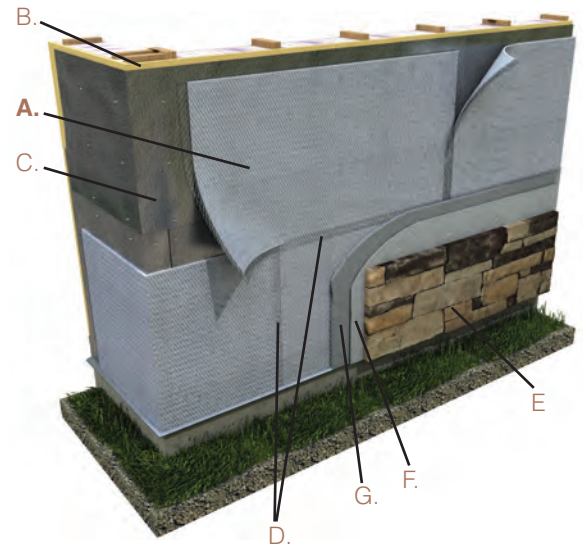
- Malla de acero con hendiduras, auto-enrasada de 3,4 lb.
- Espesor de 0,4 pulg (10 mm) de la malla de drenaje

### Tamaños y empaque

Paletizado con 10 atados/paleta, 10 paneles (180 pies<sup>2</sup>/atado)  
100 láminas por paleta (peso aproximado: 600 lbs.)

MATERIAL	ESPESOR	ANCHO*	LARGO*
Panel de metal	0,25 pulg	27 pulg	97 pulg
Malla auto-enrasada	0,25 pulg	25,5 pulg +/-	95,5 pulg +/-
		-0,5 pulg	-0,5 pulg

\*nominal



#### A. LathNet

Combinación de panel y malla de drenaje instalada de izquierda a derecha

B. Revestimiento apto para exteriores

C. Barrera resistente a la intemperie

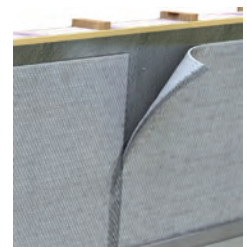
D. Los paneles LathNet se solapan como tejas sobre todas las juntas verticales y horizontales

E. Enchapado delgado de piedra o capa de acabado de estuco

F. Capa de acabado

G. Capa base

Los paneles LathNet se solapan como tejas para crear un panel y malla de drenaje continuo conforme al código todo en uno. El panel se extiende 1 pulgada como mínimo más allá de la malla en la parte inferior e izquierda de cada panel.



Cuando LathNet descansa sobre una superficie plana como vierteaguas base, recorte el panel para que quede al ras con la malla de drenaje.

